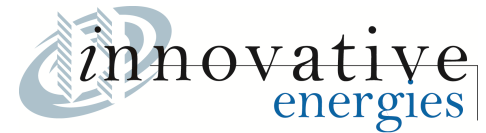


HWS1000 - 1500 SERIES

AC / DC Single Output: 1000 ~ 1500 Watts



Features

- 5th Generation design
- Universal input 85 - 265VAC
- Wide output voltage adjustment
- Short circuit and OVP protection
- Harmonic correction EN61000-3-2
- Power Factor Correction 0.98
- External output voltage control: 20% ~ 120% range.
- EMC EN55022, Immunity to EN61000-4
- International safety approvals EN60950, UL60950
- Low profile 2U height for both 1KW & 1.5KW models
- Medical grade option –**ME** Industrial grade option – **HD**
- **Not suitable for battery charging**

Specifications

Input Voltage	85 ~ 264VAC, 120 ~ 330VDC
Frequency	47 ~ 63Hz
Output Voltage	3.3 ~ 60VDC options
Output V Range	Typically $\pm 10\%$ via front panel trim pot.
Indicator	Led for DC OK
Output Power	1000 ~ 1500 watts
Efficiency	Model Dependent 73 ~ 90%
Input Current	HWS1000: 13.5A / 7.0A (115 / 230VAC) HWS1500: 19A / 10A (115 / 230VAC)
Input Harmonics	IEC61000-3-2
Power Factor	>0.95
Ripple & Noise	3-5V @ 120mV. 6-15V @ 150mV 24-48V @ 200mV 60V @ 400mV
Load Regulation	Model dependant typically $\pm 0.8\%$
Line Regulation	$\pm 0.4\%$ over input range
Temp Coefficient	0.02% per °C
Over current Protection	Constant current set at 105 ~ 150%, shutdown after 5 secs. Recycle AC power after >30 secs to restart.
Over Voltage Protection	OVP circuit will shutdown output. Recycle AC power after >30 secs to restart

Hold-Up Time	20 / 30ms @ 100 / 230VAC
Leakage Current	<1.5mA
Parallel Operation	YES with power share
Series Operation	YES
Remote Sense	YES
Remote ON/OFF	YES
Monitor Signal	Power Fail (Open Collector output)
Operating Temperature	-10°C to +50°C at 100% load. Consult office for derating to +71°C
Humidity	30 ~ 90% RH operating
Cooling	Built-in fan
Isolation Voltage	Input – Output: 3000VAC Input – Ground: 2000VAC Output – Ground: 500VAC
Safety	UL1950, EN60950, UL508, UL50178
EMI	EN55011 / EN55022 Lev B
Immunity	EN61000-4
Dimension (W x H x D)	HWS1000: 280 x 127 x 82mm 3.2kg HWS1500: 330 x 127 x 82mm 3.8kg (Includes extending terminals)

- Output A below is at 230VAC input.

Model	Output		V Range	Power W
	V	A		
HWS1000-3	3.3V	200A	2.6 – 3.9V	660W
HWS1000-5	5V	200A	4.0 – 6.0V	1000W
HWS1000-6	6V	167A	4.8 – 7.2V	1000W
HWS1000-7	7V	134A / 160Apk	6.0 – 9.0V	1005W
HWS1000-12	12V	88A / 100Apk	9.6 – 14.4V	1056W
HWS1000-15	15V	70A / 80A pk	12.0 – 18.0V	1050W
HWS1000-24	24V	46A / 59Apk	19.2 – 28.8V	1104W
HWS1000-36	36V	30.7A / 39Apk	28.8 – 43.2V	1104W
HWS1000-48	48V	23A / 29Apk	38.4 – 52.8V	1104W
HWS1000-60	60V	18.4A / 23Apk	48.0 – 66.0V	110W4

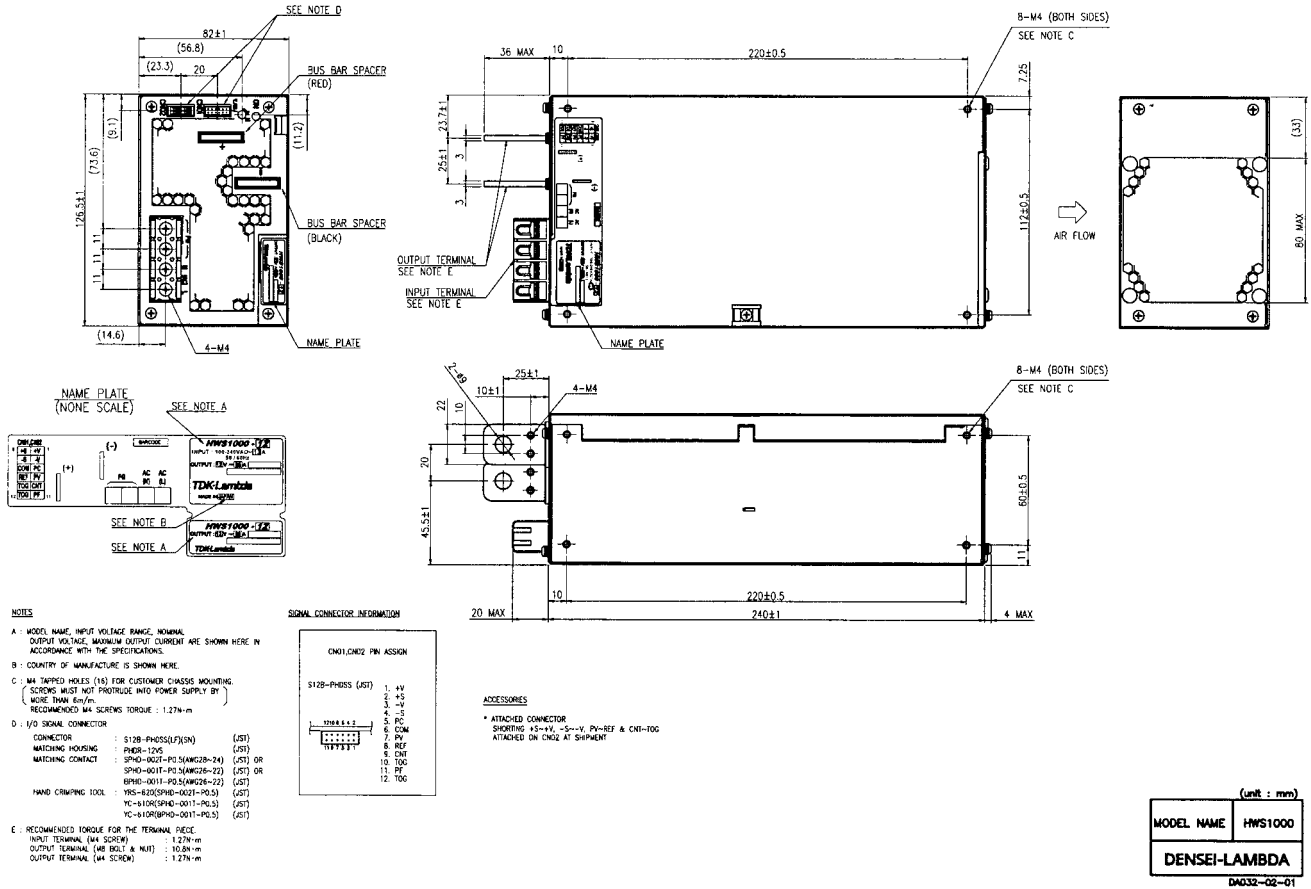
Model	Output		V Range	Power W
	V	A		
HWS1500-3	3.3V	300A	2.64-3.96	990W
HWS1500-5	5.0V	300A	4.0-6.0V	1500W
HWS1500-6	6.0V	250A / 300A pk	4.8-7.2V	1500W
HWS1500-7	7.5V	200A / 240A pk	6.0-9.0V	1500W
HWS1500-12	12V	125A	9.6 – 14.4V	1500W
HWS1500-15	15V	100A	12.0 – 18.0V	1500W
HWS1500-24	24V	70A / 105A pk	19.2 – 28.8V	1680W
HWS1500-36	36V	46.5A / 70Apk	28.8 – 43.2V	1674W
HWS1500-48	48V	32A	38.4 – 52.8V	1536W
HWS1500-60	60V	28A / 42A pk	48.0-66.0V	1680W

HWS1000 - 1500 SERIES

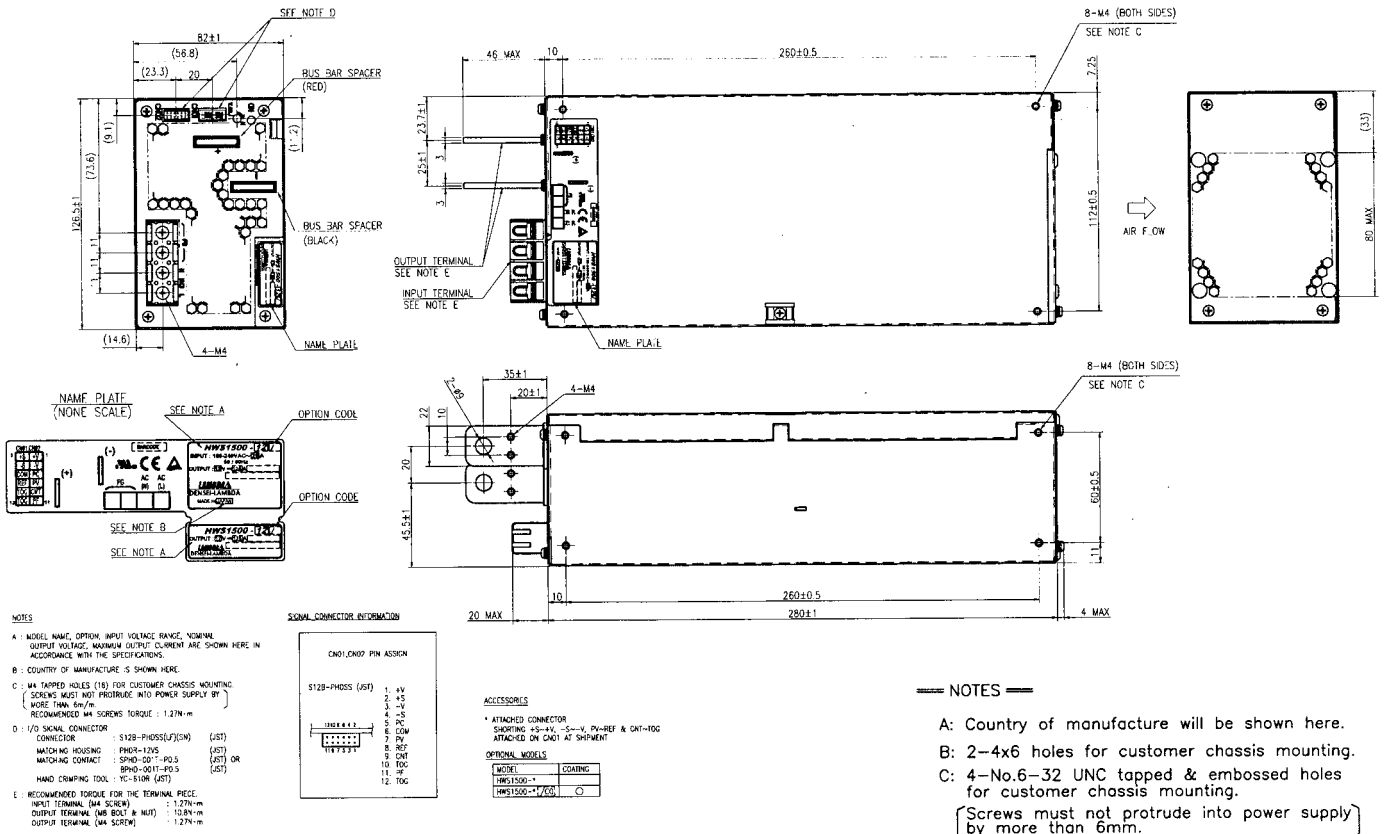
AC / DC Single Output: 1000 ~ 1500 Watts



HWS1000



HWS1500



== NOTES ==

- A: Country of manufacture will be shown here.
- B: 2-4x6 holes for customer chassis mounting.
- C: 4-No.6-32 UNC tapped & embossed holes for customer chassis mounting.
 (Screws must not protrude into power supply by more than 6mm.)