

LS SERIES

AC / DC Single Output: 25 ~ 150 Watts



Features

- Lowest cost solution
- Universal input 88 - 264VAC
- Withstands 300VAC voltage surges (5sec)
- Wide range of models: 25 -150 watts
- Output voltage adjustment
- Short circuit and OVP protection
- Harmonic correction EN61000-3-2
- EMC EN55022, Immunity to EN61000-4
- International safety approvals EN60950, UL60950
- Convection cooled & full power to 50°C
- DIN-Rail Mounting brackets for all models
- LS200 also available at 200W

Specifications

Input Voltage	LS25 – LS100: 88 ~ 264VAC (125-373VDC) LS150: 88-132 / 176-264VAC Switch selectable) (248-373VDC)
Frequency	47 – 63Hz
Efficiency	Model dependent 75 – 87%
Harmonics	IEC61000-3-2, -3
Output voltage	3.3 ~ 48vdc options
Input Current (230VAC)	LS25: 0.4A LS35: 0.55A LS50: 0.8A, LS75: 1.0A LS100: 1.2A LS150: 2.0A
Output Power	25 ~ 150 watts
Voltage Adjust.	±10% by on-board trim pot
Leakage Current	<1mA at 230VAC
Line Regulation	0.4%
Load Regulation	0.8%
Temp Coefficient	<0.02% per °C
Ripple & Noise	5V 80mV, 12V 120mV, 15V 150mV 24V 120mV, 36V 150mV, 48V 200mV
Hold-up Time	14 / 60ms (115 / 230VAC)
Over Current Protection	>110% of rated output Fold-back Current limiting with automatic recovery

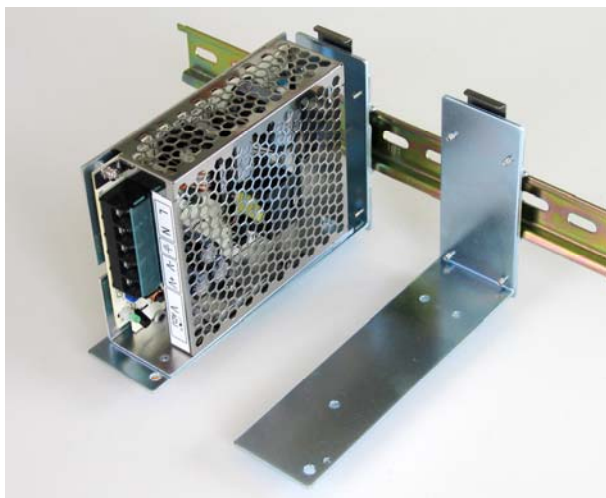
Over Voltage Protection	OVP will shutdown unit. Recycle AC power after 30 seconds to restart.
Parallel Operation	NO
Series Operation	YES
Safety	UL60950-1, EN60950-1, IEC60950-1
Isolation	Input – Output: 3000VAC Output – Ground: 1500VAC Output - Ground: 500VAC
EMI	EN55011 & EN55022-B
Immunity	EN61000-4-2
Operating Temp	-25°C to +50°C at 100% load. Derate to 60% at 70°C
Humidity	20-90% RH (No dewdrop)
Cooling	Convection cooled
Vibration	10-55Hz (sweep for 1min) 19.6m / s ² Constant, X, Y,Z 1 hour
Shock	Less than 196.1m / s ²
Connector	Screw terminals
Indicator	LED
Dimensions (L x W x H)	LS25: 79 x 51 x 28mm LS35: 99 x 81 x 36mm LS50: 99 x 97 x 36mm LS75: 129 x 98 x 38mm LS100: 159 x 97 x 38mm LS150: 199 x 98 x 38mm
Weight	LS25: 200g LS35: 300g LS50: 350g LS75: 410g LS100: 600g LS150: 700g

LS SERIES

AC / DC Single Output: 25 ~ 150 Watts

Model	Output		Voltage Range	Power W
	V	A		
LS25-3	3.3V	6A	3.0 -3.3V	25W
LS25-5	5V	5A	4.75-5.5V	
LS25-12	12V	2.1A	10.8-13.2V	
LS25-15	15V	1.7A	13.5-16.5V	
LS25-24	24V	1.1A	22-27.2V	
LS25-36	36V	0.75A	32-40V	
LS25-48	48V	0.57A	42-54V	
LS35-3	3.3V	7A	3.0 -3.3V	
LS35-5	5V	7A	4.75-5.5V	
LS35-12	12V	3A	10.8-13.2V	
LS35-15	15V	2.4A	13.5-16.5V	
LS35-24	24V	1.5A	22-27.2V	
LS35-36	36V	1.0A	32-40V	
LS35-48	48V	0.8A	42-54V	
LS50-3	3.3V	10A	3.0-3.6V	50W
LS50-5	5V	10A	4.75-5.5V	
LS50-12	12V	4.2A	10.8-13.2V	
LS50-15	15V	3.4A	13.5-16.5V	
LS50-24	24V	2.2A	22.0-27.2V	
LS50-36	36V	1.4A	32.0-40.0V	
LS50-48	48V	1.1A	42.0-54.0V	

Model	Output		Voltage Range	Power W
	V	A		
LS75-3	3.3V	15A	3.0-3.6V	75W
LS75-5	5V	12A	4.75-5.5V	
LS75-12	12V	6A	10.8-13.2V	
LS75-15	15V	5A	13.5-16.5V	
LS75-24	24V	3.2A	22.0-27.2V	
LS75-36	36V	2.1A	32.0-40.0V	
LS75-48	48V	1.6A	42.0-54.0V	
LS100-3	3.3V	20A	3.0-3.3V	
LS100-5	5V	16A	4.75-5.5V	
LS100-12	12V	8.5A	10.8-13.2V	
LS100-15	15V	7A	13.5-16.5V	
LS100-24	24V	4.5A	22.0-27.2V	
LS100-36	36V	3A	32.0-40.0V	
LS100-48	48V	2.3A	42.0-54.0V	
LS150-3	3.3V	30A	3.0-3.3V	150W
LS150-5	5V	26A	4.75-5.5V	
LS150-12	12V	12.5A	10.8-13.2V	
LS150-15	15V	10A	13.5-16.5V	
LS150-24	24V	6.5A	22.0-27.2V	
LS150-36	36V	4.3A	32.0-40.0V	
LS150-48	48V	3.3A	42.0-54.0V	



DIN Rail Mounting Option

Din Rail Part No;

LS-DIN-1
LS-DIN-2
LS-DIN-3

Suitable with models:

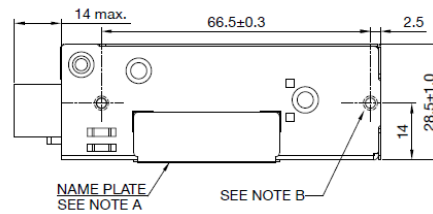
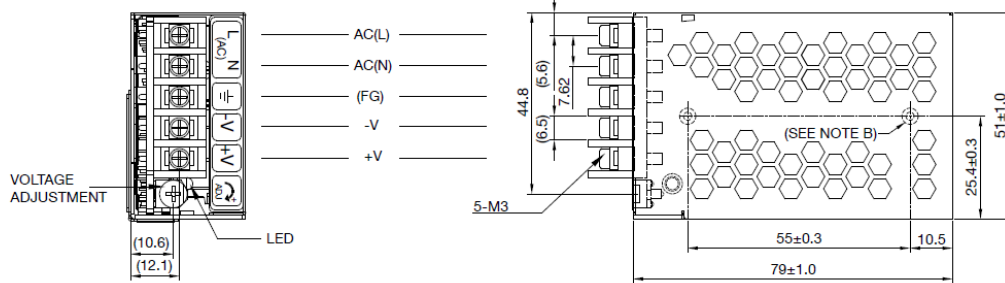
LS25, LS35, LS50
LS75
LS100, LS150

LS SERIES

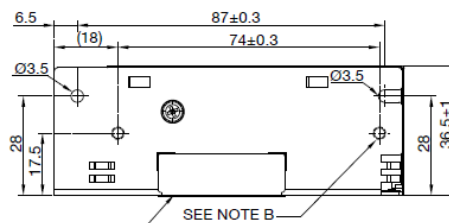
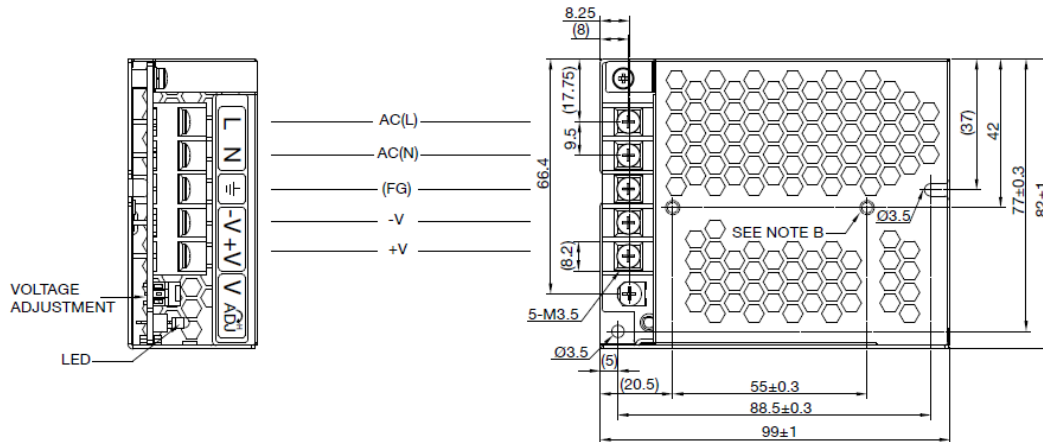
AC / DC Single Output: 25 ~ 150 Watts



LS25



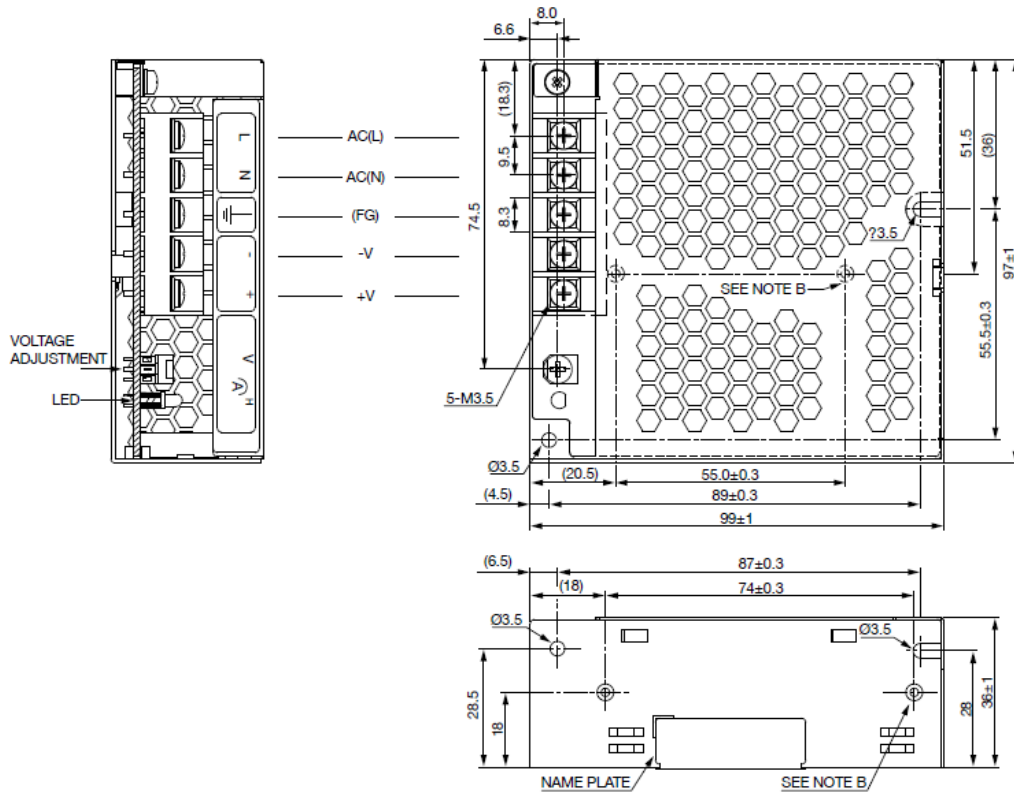
LS35



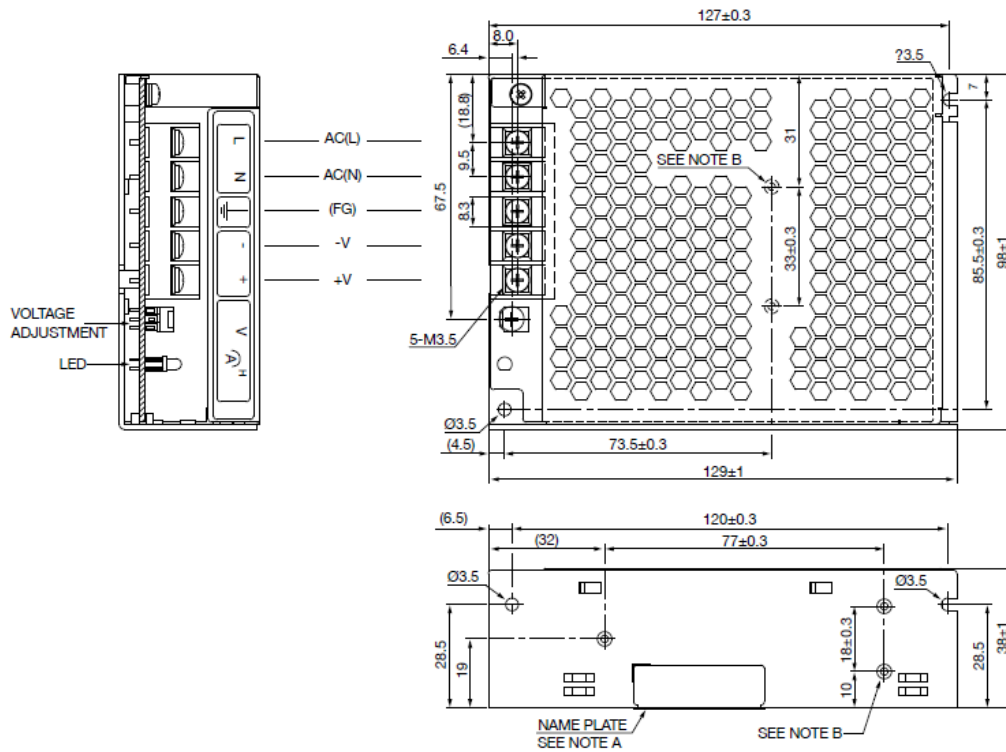
LS SERIES

AC / DC Single Output: 25 ~ 150 Watts

LS50

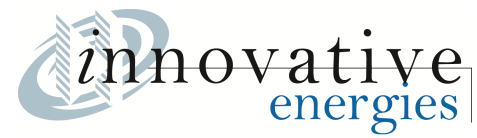


LS75

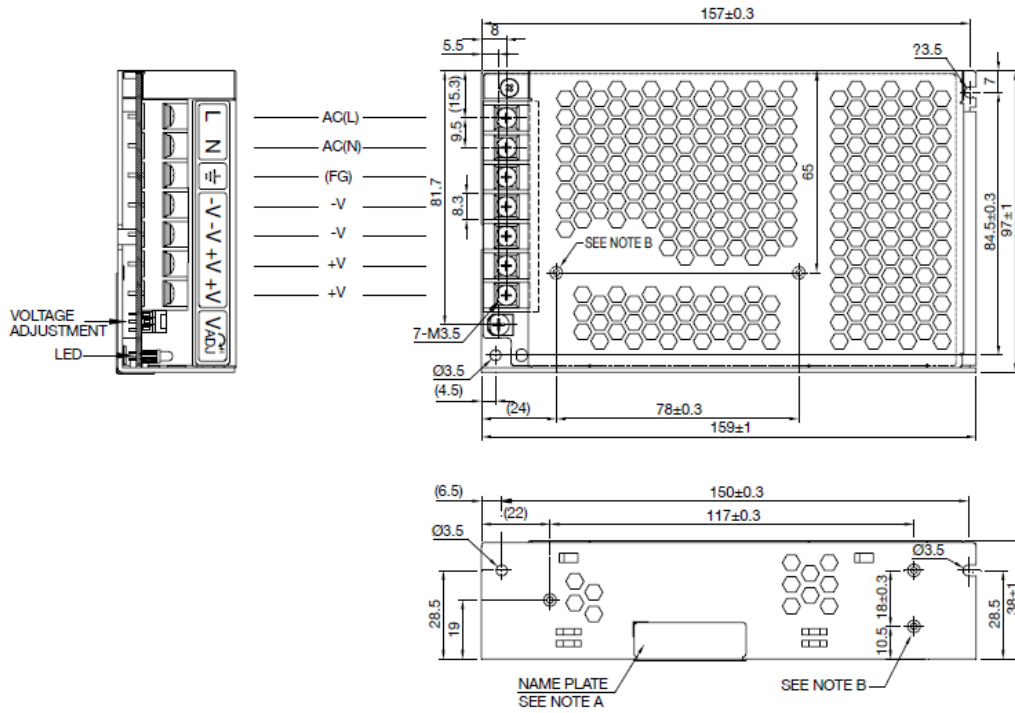


LS SERIES

AC / DC Single Output: 25 ~ 150 Watts



LS100



LS150

